

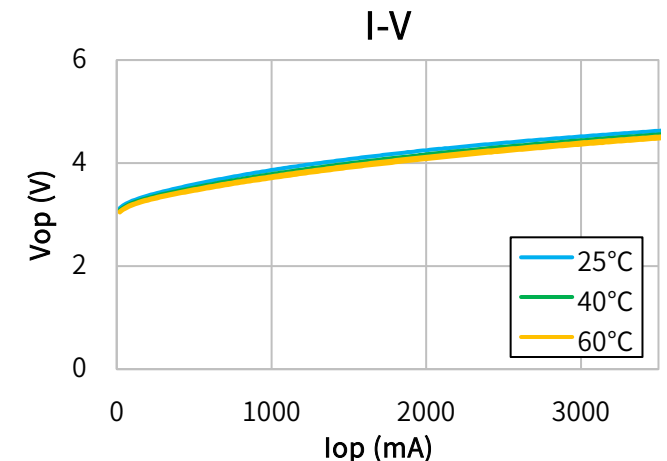
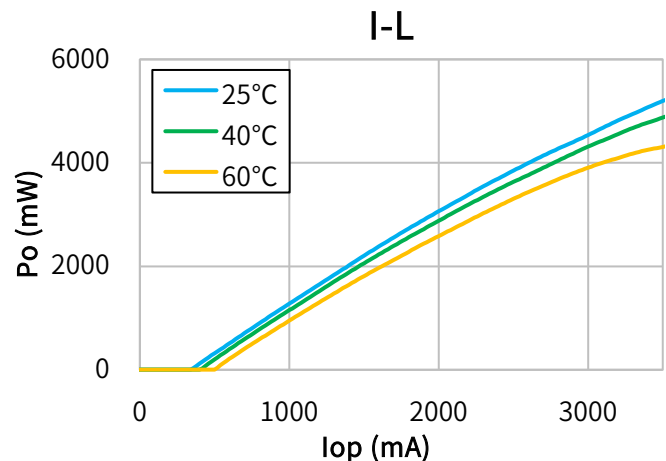


Characteristics

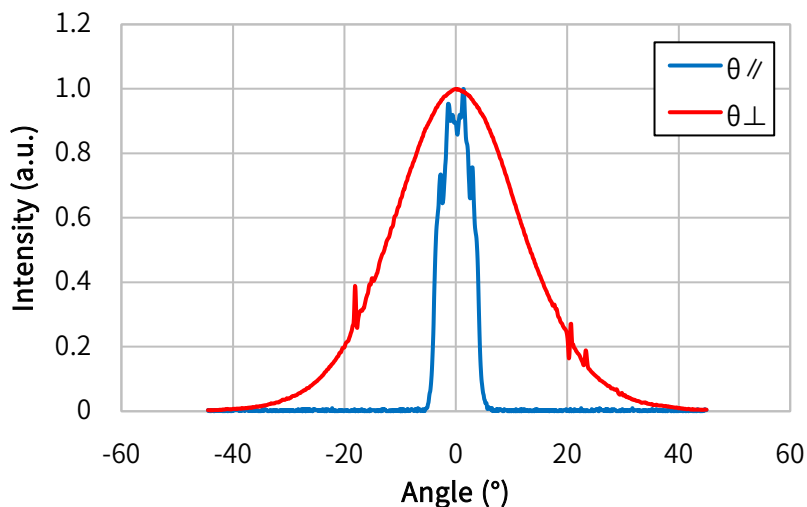
(Tc=25°C, CW)

Item	Conditions	Characteristic value (TYP.)
Wavelength (Peak)	Po=5000mW	440nm
Output	—	5000mW
Threshold current	—	350mA
Operating current	Po=5000mW	3100mA
Operating voltage	Po=5000mW	4.6V
Far Field (1/e ²)	Po=5000mW	θ// 10°, θ⊥ 47°
Terminal connections	No.13	ϕ9.0

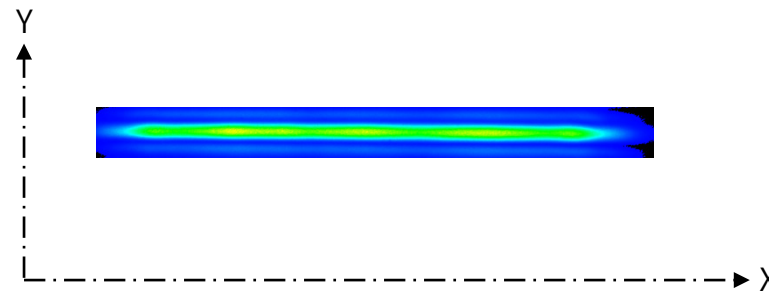
CW I-L, I-V Temperature



Far Field Pattern



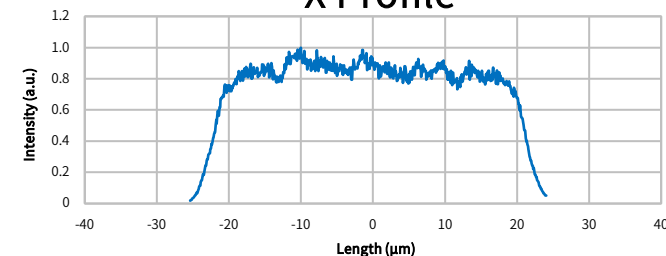
Near Field Pattern



Emitter size

	FWHM (μm)	1/e (μm)	1/e ² (μm)
X	41.0	42.5	47.2
Y	1.0	1.2	1.7

X Profile



Y Profile

