

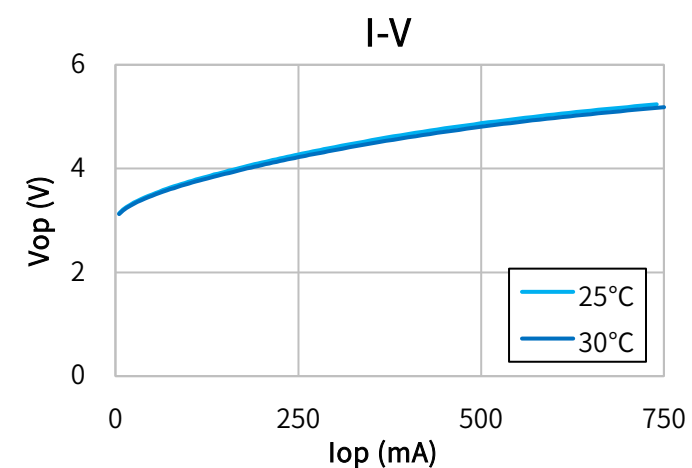
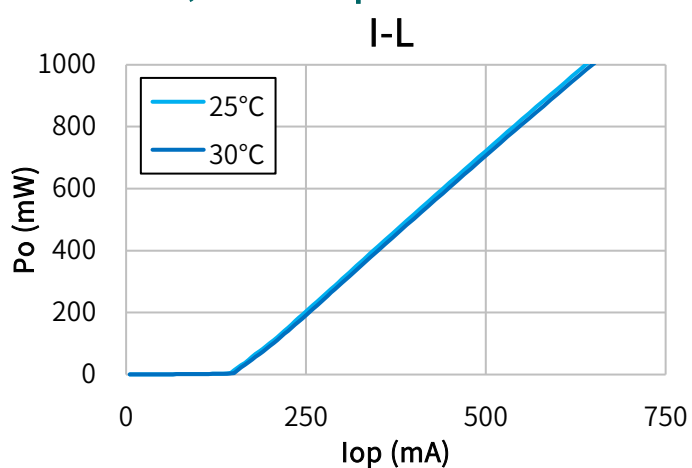


## Characteristics

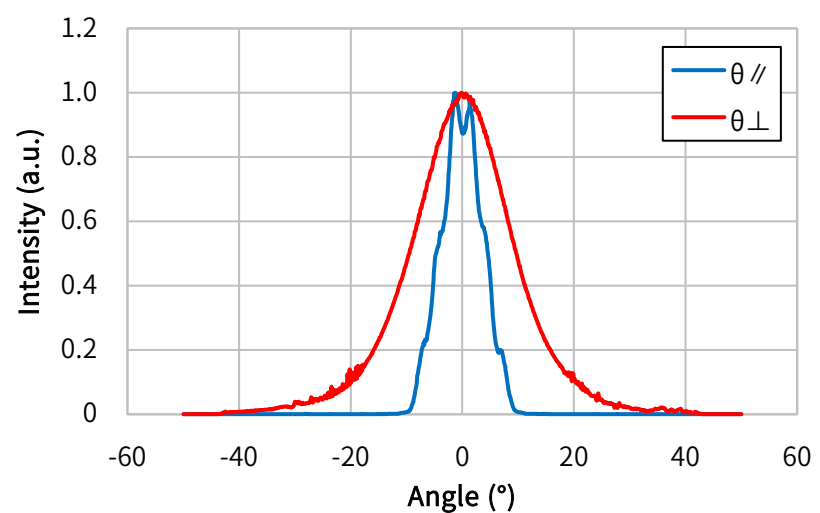
(Tc=25°C, CW)

Item	Conditions	Characteristic value (TYP.)
Wavelength (Peak)	Po=1000mW	405nm
Output [Max]	—	1000mW [1100mW]
Threshold current	—	150mA
Operating current	Po=1000mW	650mA
Operating voltage	Po=1000mW	5.0V
Far Field (1/e <sup>2</sup> )	Po=1000mW	θ// 16°, θ⊥ 40°
Terminal connections	<a href="#">No.9</a>	<a href="#">φ5.6</a>

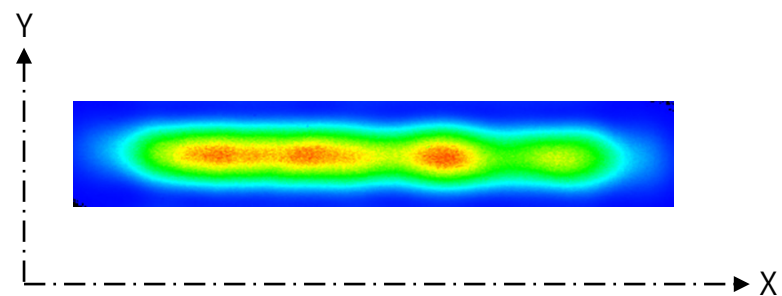
## CW I-L, I-V Temperature



## Far Field Pattern



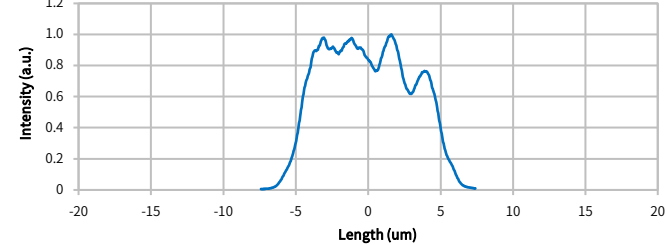
## Near Field Pattern



Emitter size

	FWHM (μm)	1/e (μm)	1/e <sup>2</sup> (μm)
X	9.5	9.9	11.5
Y	0.9	1.1	1.5

## X Profile



## Y Profile

